



**GREEN CITY**

EXTENSION

BAWADIYA KALAN

BHOPAL

*Where calmness, serenity resides*

**RERA No. : P-BPL-24-4457**

## PROUD HISTORY, PROMISING FUTURE

### COMPANY PROFILE :

M/s KRISHNA HOMES enjoys the reputation of a famous, well established and widely trusted Builder and Developer in Bhopal, having a committed and competent team of high profile Engineers, Architects and Construction Professional with exemplary experience in creating the best possible living zones on most advanced Design and Technology.

Ever since it's inception in the year 1998, the mission of KRISHNA HOMES is to provide a healthy and a high-life style to people from all walks of life.

Our successful projects : GREEN CITY, GREEN CITY MALL , GREEN HEIGHTS, KRISHNA HEIGHTS, SIDDHARTH NILAYAM, SOUTH AVENUE, ORACLE (Sister Concern's Venture) and RHYTHM PARK are living testimonial of our concern and sensitivity towards high standard in planning, construction with eco-friendly environment and most importantly, timely delivery of possession to our happy and satisfied customers who become part of our Krishna Homes Family.



**GREEN CITY**  
— EXTENSION —  
**BAWADIYA KALAN**  
**BHOPAL**

*Where calmness, serenity resides*

## OUR PREVIOUS PROJECTS

GREEN CITY

GREEN CITY MALL

GREEN HEIGHTS

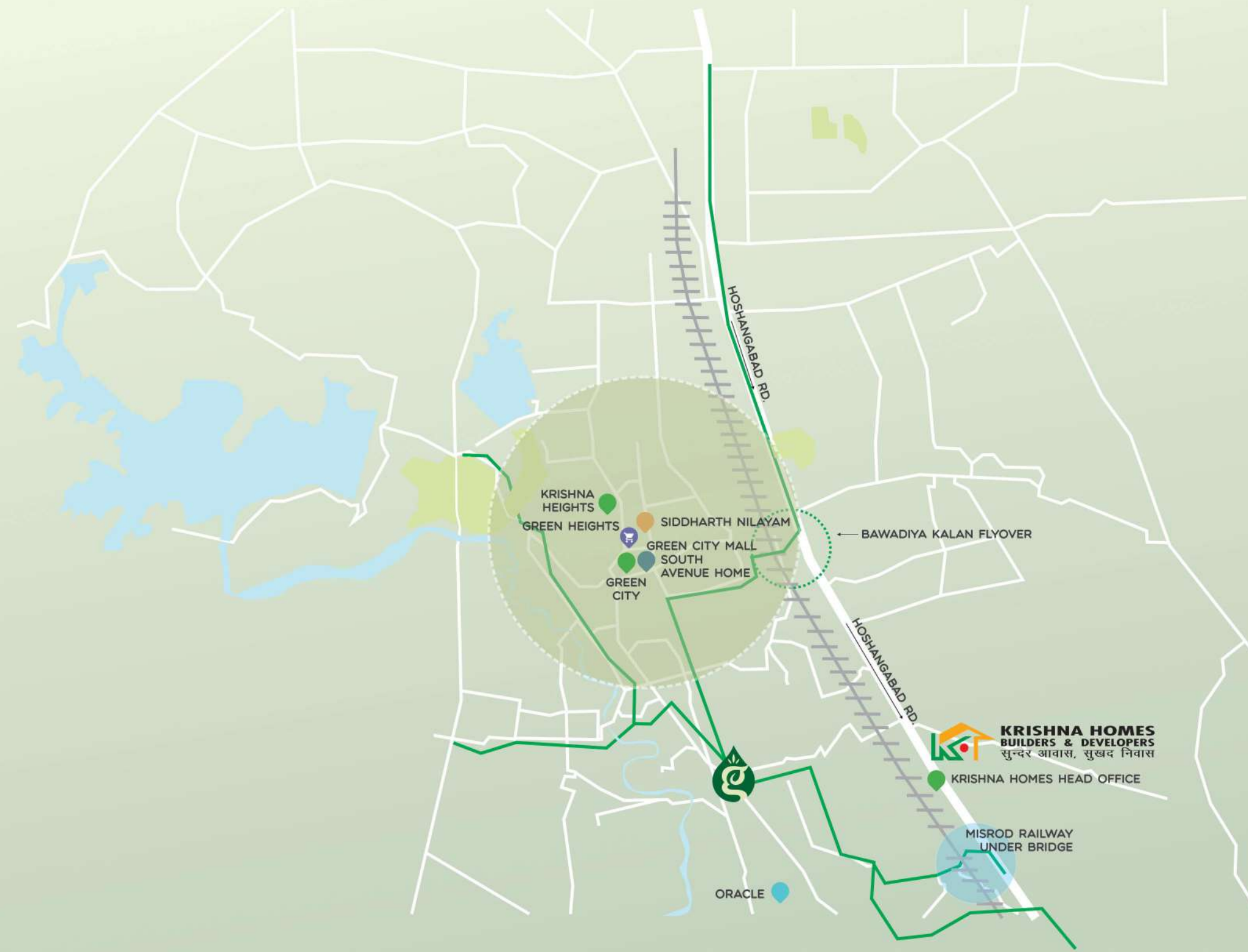
KRISHNA HEIGHTS

SIDDHARTH NILAYAM

SOUTH AVENUE

ORACLE (Sister Concern's Venture)

RHYTHM PARK



# LOCATION MAP



Site Address : Green City Extension  
Near SPS Rohit nagar, Bawadiya Kalan, Bhopal 462026





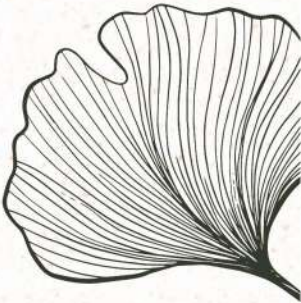
Artistic impression



# LUXURIOUS LIVING SPACES



Artistic impression





# PINNACLE OF GRACE AND ULTRA-LUXURY

This unique project is designed in an artistic way to create a perfect harmony within the infrastructure, it's surroundings and building designs, to make your living comfortable and joyful. These exclusive super- luxurious condominiums will rise as the pinnacle of grace, elegance and sophistication while swaying you to the world of enchanting experiences and inspiration for times to come.



# WHY SHOULD YOU CHOOSE



A Project with high and superior quality construction work.



Located at the most sought-after location of Bhopal.



Aspires to be the cleanest and the Greenest campus with copious space for parking.



Integrated with a plethora of amenities such as Clubhouse having Multi-purpose hall, (Yoga-Meditation room), Library, Gymnasium, Table Tennis, Snooker, Carrom, Card room, Kids play room etc.



Lush green landscape lawn.



Specifically designed flats keeping in mind the sufficient ventilation and ample amount of natural light present in each flat.



The company strives for on-time delivery of flats.



Highly secured single gated covered campus.



Meticulously planned floor layout so that you can utilize each and every Sq. Ft. of your residence to the fullest.



Having the legacy of Green City (our previous project) in Gulmohar to be the cleanest colony of Bhopal, awarded by the Hon'ble CM of Madhya Pradesh under the Swachh Sarvekshan.

Therefore Green City Extension is in line with our long-held legacy.

**Green City Extension is the ultimate benchmark project in Bhopal.**



# ENJOY GREAT TIMES 24X7, 365 DAYS

At **Green City Extension**, the Covered Campus planning is Top-Notch

Meticulously worked out to the smallest details, the objective of this detailing is to create maximum comfort for the residents. Amenities like wide cemented roads and parking have been provided to create a hassle-free living experience.

Fitted with modern gadgetry and well-planned service systems like modern fire fighting systems, rain water harvesting, 24x7 power back-up in common areas etc. to provide absolute peace of mind.

*Stay green, stay in peace & stay safe.*







Wide roads and ample car parking

Spacious lawn

Elegantly manicured green spaces

Small childrens' sand tot lot



Landscaped campus with lush green development



Secure campus with electronic surveillance

Adequate water supply through sump well

Wide cement concrete/paving blocks roads with storm water drain along with side plantation

Underground modern sewage disposal system

Lifts and common area with 24x7 power backup



*Nature in her green, tranquil woods heals and soothes all affliction.*



## HIGH RISE LUXURIOUS FLATS



# EMBRACE AN ELEGANT LIFESTYLE!

In these stressed times, keeping fit is the need of the hour. Gear up for an ultimate lifestyle that will pack an exciting punch into your daily routine. **Green City Extension** presents a slew of features for residents entertainment and relaxation. Meticulously worked out to the **smallest details**, the objective of this detailing is to create a maximum comfort for the residents.

---

*Green fingers are the extension of a verdant heart.*





**SPEND QUALITY TIME WITH YOUR LOVED ONES**



EXPLORE YOUR SURROUNDINGS IN PEACE



# HEART IS WHERE THE GREENS ARE

*Learning of the green world, what can  
be thy place in scaled invention or true artistry.*





A perfect place to unwind after a hard day's work, the Club house at **GREEN CITY EXTENSION** provides you a complete sporting environment along with a pleasant mood to **revitalize your soul**.

-  Club house
-  AC Gymnasium
-  Club/ Multipurpose hall
-  Snooker/ Billiards
-  Table tennis
-  Library
-  Indoor board games room
-  Society office



*A meter of green is greener than a centimeter.*





MULTIPURPOSE HALL

Artistic impression

**GOOD TIMES ARE  
JUST A STEP AWAY**



Artistic impression



GYMNASIUM

Artistic impression



MULTIPURPOSE HALL

Artistic impression



# ELEGANCE BECKONS

Good taste, modern design aesthetics and the practical aspects of classy living are the driving force behind our cosy homes. There's a comfortable corner for everyone.



LIBRARY

Artistic impression



INDOOR GAMES



Artistic impression



Artistic impression

KIDS PLAY

SAGAR PUBLIC SCHOOL

ROHIT NAGAR

FROM AAKRITI ECO CITY

TO SPS ROHIT NAGAR & TOWARDS HOSHANGABAD ROAD

TO BDA MISROD PHASE II SCHEME

Artistic Impression



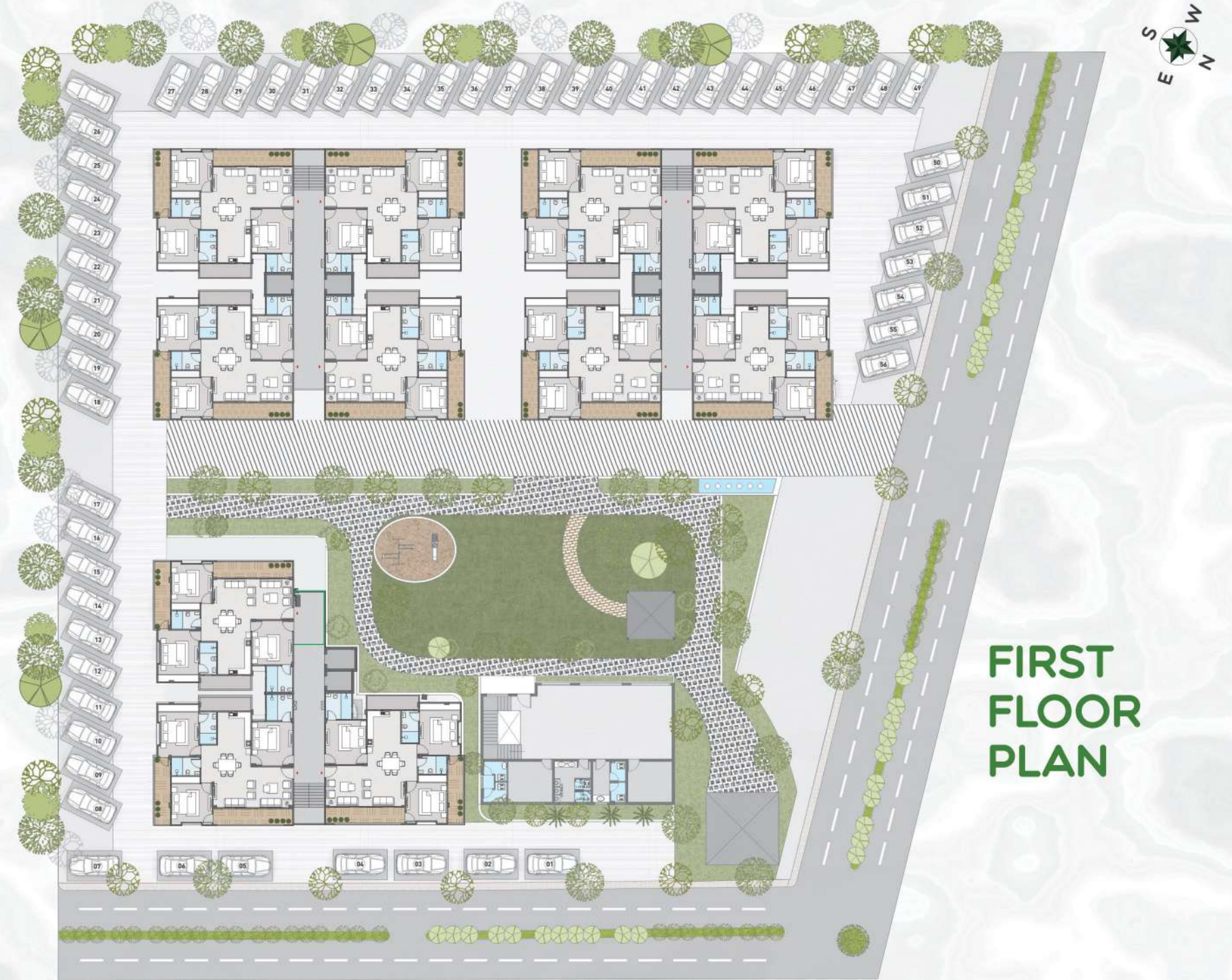


## LAYOUT PLAN

- 01 PARK
- 02 MULTI PURPOSE HALL
- 03 KITCHEN AND STORE
- 04 SOCIETY OFFICE
- 05 SITOUT
- 06 LAWN AND CHILDREN'S PARK
- 07 TOT LOT
- 08 VISITOR PARKING

Note :

1. The window size/ it's location in rooms may change because of elevation features.
2. Overall layout may vary because of statutory reasons, in case required.
3. Column location and sizes may vary as per structure.



## FIRST FLOOR PLAN

## UNIT PLAN BLOCK JADE AND GREEN SAPPHIRE



1<sup>ST</sup> TO 8<sup>TH</sup> FLOOR PLAN

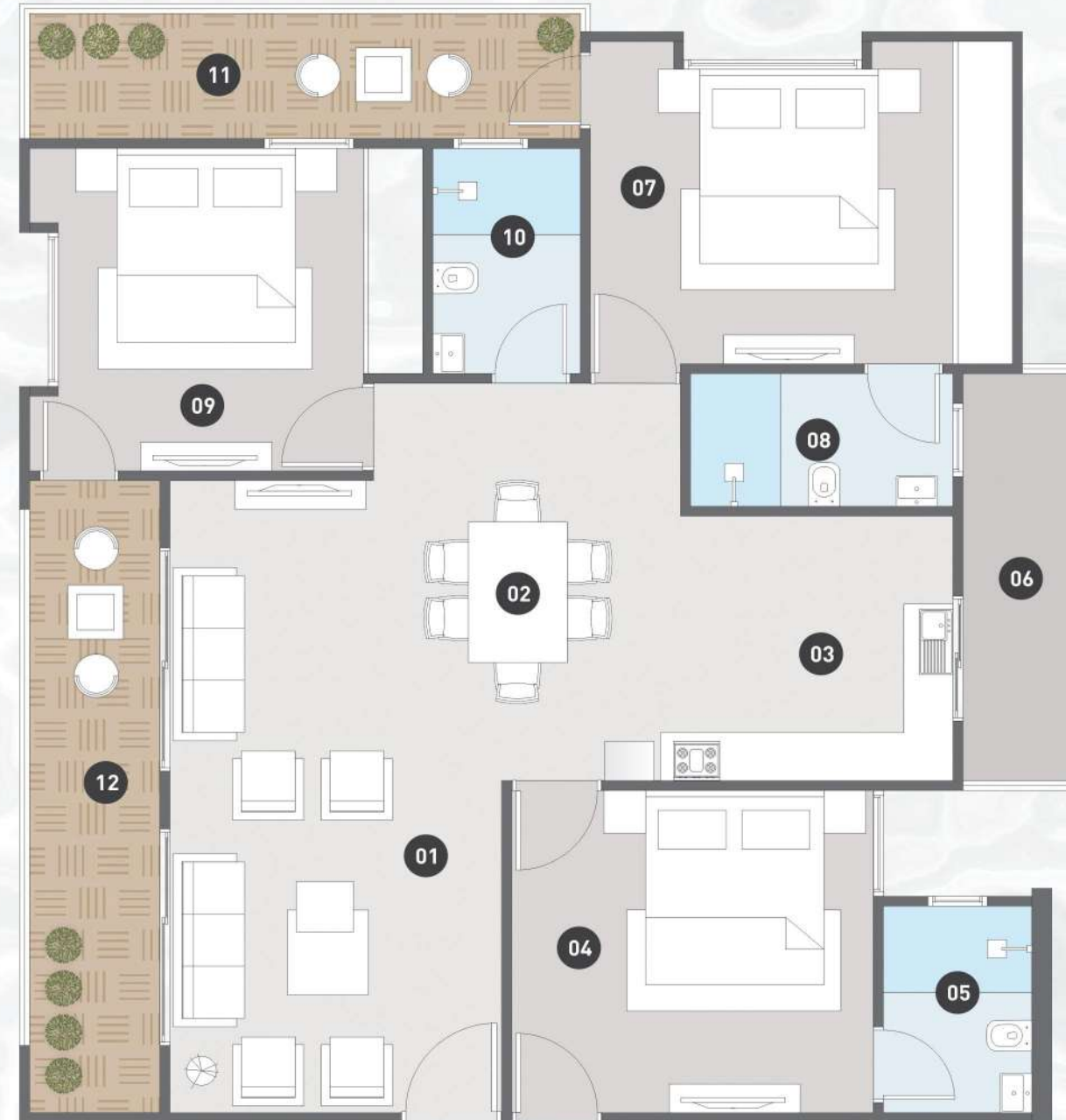
### LEGEND

01 LIVING ROOM	21'-6"x11'-0"
02 DINING AREA	13'-6"x10'-2"
03 KITCHEN	9'-0"x11'-0"
04 BEDROOM	11'-0"x12'-0"
05 TOILET	7'-0"x4'-11"
06 UTILITY/ WASH	14'-6"x4'-0"
07 BEDROOM	11'-0"x14'-0"
08 TOILET	8'-8"x4'-6"
09 BEDROOM	11'-0"x13'-0"
10 TOILET	7'-8"x5'-0"
11 BALCONY	4'-7"x18'-10"
12 BALCONY	21'-10"x4'-8"

**CARPET AREA :**  
90.68 Sq.mtrs/ 976.07 Sq.ft

**BUILT UP AREA :**  
118.78 Sq.mtrs/ 1278.537 Sq.ft

**SUPERBUILT UP AREA :**  
160.35 Sq.mtrs/1725.993 Sq.ft



DOUBLE DOOR ENTRY

Note : 1. The window size/ it's location in rooms may change because of elevation features. 2. The overall layout may vary because of statutory reasons, in case required. 3. Column location and sizes may vary as per structure. 4. Layout shown is for illustration purpose only, for specific unit floor plan please contact sales. 5. Saleable area is tentative and is subject to change due to modifications asked for by approving authorities from time to time till occupancy certificate is obtained. Architect reserves the right to add/ delete any details/ specifications/ elevations mentioned.

## UNIT PLAN BLOCK EMERALD



1<sup>ST</sup> TO 8<sup>TH</sup> FLOOR PLAN

### LEGEND

01 LIVING ROOM	21'-6"x11'-0"
02 DINING AREA	13'-6"x10'-2"
03 KITCHEN	9'-0"x11'-0"
04 BEDROOM	11'-0"x12'-0"
05 TOILET	7'-0"x7'-1"
06 UTILITY/ WASH	14'-6"x4'-4"
07 BEDROOM	11'-0"x14'-0"
08 TOILET	8'-8"x4'-6"
09 BEDROOM	11'-0"x13'-0"
10 TOILET	7'-8"x5'-0"
11 BALCONY	4'-7"x18'-10"
12 BALCONY	21'-10"x4'-8"

**CARPET AREA :**  
92.02 Sq.mtrs/ 990.495 Sq.ft

**BUILT UP AREA :**  
120.52 Sq.mtrs/ 1297.266 Sq.ft

**SUPERBUILT UP AREA :**  
162.70 Sq.mtrs/1751.288 Sq.ft



DOUBLE DOOR ENTRY

Note : 1. The window size/ it's location in rooms may change because of elevation features. 2. The overall layout may vary because of statutory reasons, in case required. 3. Column location and sizes may vary as per structure. 4. Layout shown is for illustration purpose only, for specific unit floor plan please contact sales. 5. Saleable area is tentative and is subject to change due to modifications asked for by approving authorities from time to time till occupancy certificate is obtained. Architect reserves the right to add/ delete any details/ specifications/ elevations mentioned.

# STYLISH HOMES

Every room and corner is so designed to have enough light and ample ventilation. Equipped with windows to reduce heat due to direct sunlight and to keep your interiors cool.





LIVING ROOM

Artistic impression



Artistic impression



BEDROOM



Artistic Impression



KITCHEN



# SPECIFICATIONS

## STRUCTURE

- Safe and sound quality controlled RCC frame structure with best material and high grade components with relevant IS code for better safety. - Earthquake resistant design

## PLASTER WORK

- Double coat sand faced plaster on external walls. - Single coat plaster in inside area.

## FLOORING & WALL TILING

- Matt finish/ Vitrified tile flooring having greater strength in entire area. - Easy maintainable & modern designer vitrified tile concept up to lintel level in bathrooms.

## DOOR AND WINDOW

- Moulded panel doors with laminated finish and safety lock. - Main door along with magic eye.
- Doors fitted with premium quality S.S. finish hardware fittings. - UPVC3 track windows with mosquito net.
- Granite stone still in window and main door frame.
- Flush door shutters with S.S fittings and wooden frames in rest all the doors.

## ELECTRIC WORK

- "ISI" Mark modular electrical accessories. - Circuit security MCBs - Fire resistant and concealed multi strand copper wiring with 3 phase meter. - Separate line for inverter connection. - Provision for sufficient (15A & 5A) power point for AC, microwave, fridge etc.

## PAINTING

- External painting with weather shield paint finish. Internal painting with distemper.
- One textured paint wall in each bedroom

## WATER PROOFING

- Water proofing in all toilets & terrace area to prevent seepage.

## BATHROOM

- Anti- skid tile flooring. - Good quality designer sanitary ware for spotless and sparkling toilets.
- One toilet will have exclusive premium shower panel with multiple jets. - High quality plumbing fixtures.
- Corrosion free and leak proof CPVC/UPVC pipe & fittings (ISI make).

## KITCHEN

- Granite platform with ceramic tiles dado up to 2" height. - Aqua Guard point. - Modular kitchen with chimney.
- Stainless steel kitchen sink with drain board.

## VARANDAH

- Anti- skid tile flooring in varandah.

## LANDSCAPING

- Planned landscaping with more than 70% open area.

## LIFTS

- One high speed elevator in each tower.

## UTILITY POINTS

- A.C. point in drawing/ living/ all bedrooms.
- Washing machine point in wash area & hot water tap in bathrooms.
- Cable TV and phone point in drawing room and all bedrooms.
- Provision for power point and water point for Aquaguard /R.O. system.
- Provision for power point for refrigerator and electric mixer.

स्वच्छ सर्वेक्षण 2022



We at Green City Extension respect clean & green living. Our previous Project Green City awarded as the zero waste and one of the cleanest society under Swachh Bharat Survey. Our practical approach of utilizing waste to create compost not only benefits the environment but also the whole community. The entire community works towards the concept of sustainable living : Reduce. Reuse. Recycle. Recover. that will make the **Green City Extension** cleanest society of Bhopal.



Bin segregation



Community composting



Home composting



4Rs

**COMPANY'S CREDIBILITY :**

Krishna Homes Builders and Developers, led by passionate directors, fully engrossed in ensuring the Group's technical standards and high level of quality construction. With a policy of timely delivery according to the customer's requirements thus ensuring satisfaction to thousands of customers, the company has always strived hard to keep it's commitments and thus enjoys an enormously booming status in the construction industry.



BW Disrupt 30 under 30 award  
by Business World in 2022

Pride of M.P. Award  
by Dainik Bhaskar 2018

Emerging Developer of the Year 2019  
Realty Facts, Quikr Homes & Google

Young Achiever Award 2019  
Realty Facts, Quikr Homes & Google



## BREATHTAKING LARGER THAN LIFE LOCATION

- Green City Extension is located in the most posh area in the south of Bhopal.
- Centrally located from all 4 major malls in Bhopal, **Green City Extension** manages to strike the perfect balance between accessibility and tranquillity.
- Surrounded by 60 feet wide roads Green City Extension promises even greater accessibility and return in the future.



### LEISURE

- 1.4 KMS.** Barbeque Nation
- 2.5 KMS.** Aura Mall
- 3.3 KMS.** Ashima Mall
- 3.5 KMS.** Capital Mall
- 4.0 KMS.** Hotel Radisson
- 4.8 KMS.** Shahpura Lake
- 8.5 KMS.** Hotel Courtyard Marriott
- 8.5 KMS.** DB Mall
- 9.0 KMS.** Hotel Taj Lake Front



### CONVENIENCE

- 0.1 KMS.** Proposed BDA commercial market
- 0.2 KMS.** Indian Oil fuel point
- 0.3 KMS.** Aakriti Eco City Business Centre
- 0.5 KMS.** Bharat Petroleum fuel point
- 1.0 KMS.** Misrod police station
- 1.4 KMS.** Mahindra Fuel Point
- 2.6 KMS.** Shahpura Police Thana
- 3.5 KMS.** D-Mart Hoshangabad Road
- 5.5 KMS.** 10 No. Market
- 7.0 KMS.** Rani Kamlapati railway station
- 8.5 KMS.** ISBT bus stand



### HOSPITAL

- 1.0 KMS.** Pushpanjali superspeciality hospital and Test tube baby center
- 1.0 KMS.** Sage Apollo hospital
- 2.0 KMS.** Ubuntu heart hospital
- 2.1 KMS.** Bhopal hospital & Research Center (Sacklecha)
- 2.2 KMS.** Sagar Multispeciality hospital
- 2.5 KMS.** Bisoniya hospital cosmetic & plastic surgery
- 3.0 KMS.** Noble multispeciality hospital
- 5.0 KMS.** Bansal hospital
- 6.5 KMS.** Bhopal fracture hospital
- 6.5 KMS.** Gastrocare, Liver & Digestive disease center
- 7.0 KMS.** Asian Globus hospital
- 7.1 KMS.** National hospital
- 7.2 KMS.** Narmada hospital
- 7.5 KMS.** AIIMS Hospital



### EDUCATION

- 0.1 KMS.** Sagar Public School
- 1.0 KMS.** World Way Intl. School
- 1.5 KMS.** Orion Intl. School
- 1.5 KMS.** Extol College
- 2.0 KMS.** SAGE International school
- 3.3 KMS.** Rajeev Gandhi Hr.Sec. school
- 4.8 KMS.** International Public School
- 5.0 KMS.** St. Joseph CoEd school
- 5.0 KMS.** Barkatullah University
- 5.0 KMS.** Champion School
- 6.5 KMS.** Mount Carmel school



### HOLY PLACES

- 0.5 KMS.** Maa Durga mandir
- 0.5 KMS.** Bholenath mandir
- 1.5 KMS.** Radhe Krishna mandir
- 1.8 KMS.** Shri Digamber jain mandir
- 2.0 KMS.** Ayyappa temple
- 2.0 KMS.** Shree Ram temple
- 6.0 KMS.** Hanuman mandir 1100 quarters

- Newly constructed Bawadiya Flyover is just 3 kms away from our project improving connectivity of Hoshangabad Road and New Bhopal.



DEVELOPER

# KRISHNA HOMES BUILDERS & DEVELOPERS

सुन्दर आवास, सुखद निवास

MEMBER



ARCHITECT



STRUCTURE ENGINEER



FACADE & LANDSCAPE



SCAN HERE



**Head Office Address :** Krishna Homes, Adjoining Toyota Showroom, Hoshangabad Road Bhopal 462026

**Email:** [contact@krishnahomesbhopal.in](mailto:contact@krishnahomesbhopal.in), **Website :** [www.krishnahomesbhopal.com](http://www.krishnahomesbhopal.com)